

Every three years, ADCES surveys the universe of diabetes care and education specialists (DCES) to document current practice within the US, uncover trends in the specialty and learn about factors influencing the work of today's DCES.

WHO IS TODAY'S Diabetes Care and Education Specialist?

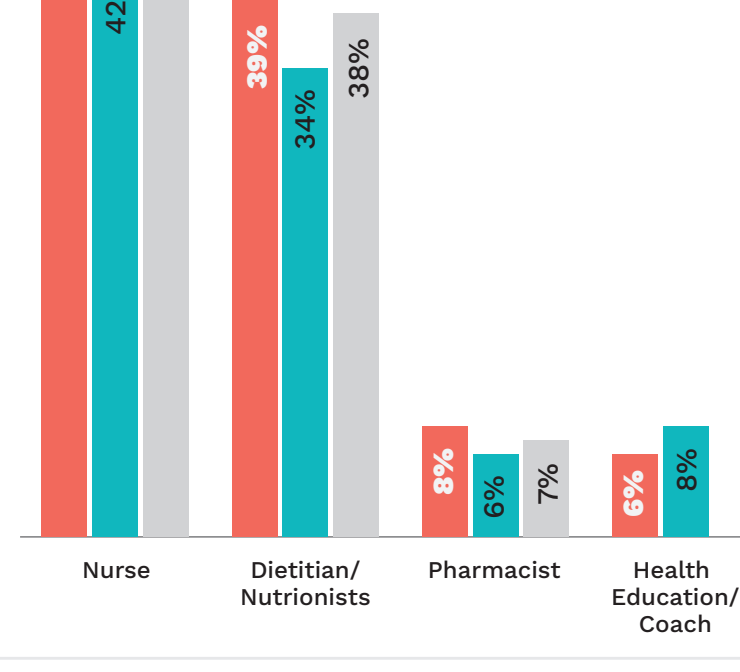
The demographics of the specialty have not changed much over the years



What type of professionals become DCESs?

The Specialty Continues to Attract a Diverse Group of Professionals

While all respondents are practicing diabetes care and education specialists, each has a primary discipline, which adds to the richness of our interdisciplinary specialty.



DCESs Are Seasoned Professionals

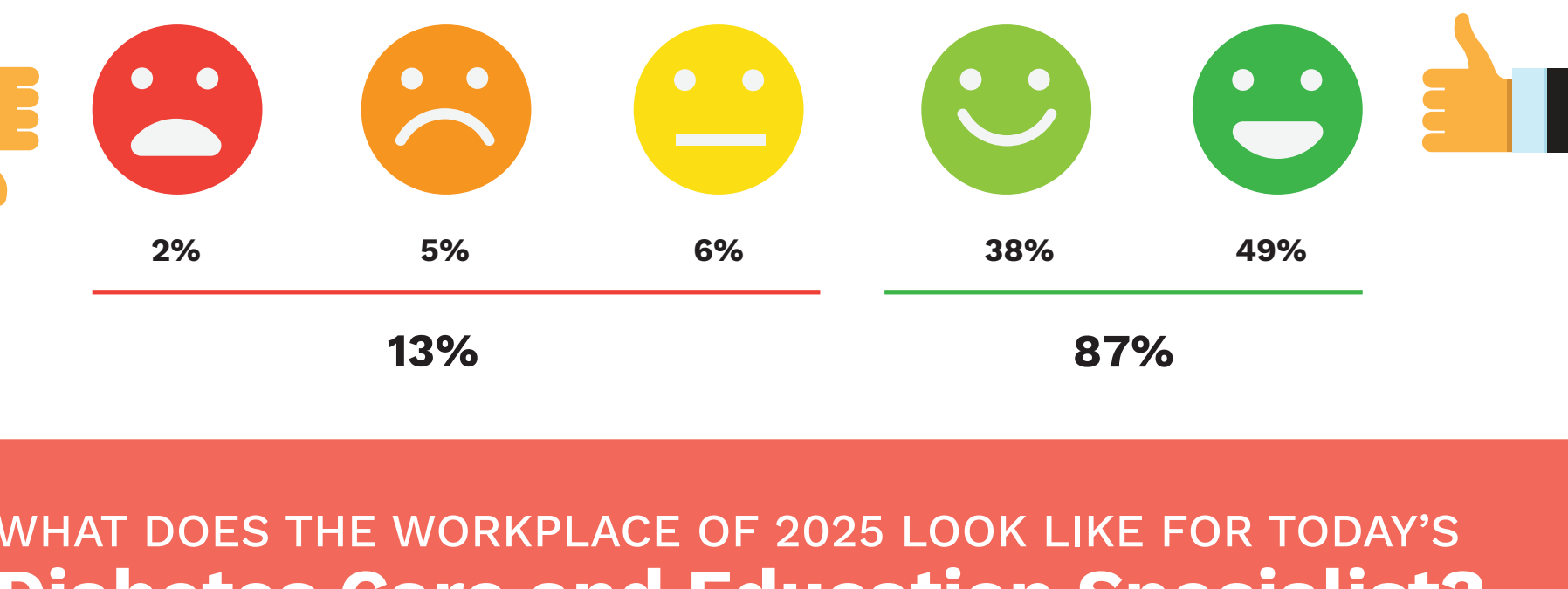
Most practicing diabetes care and education specialists have many years of experience in health care.



How satisfied are DCESs with their career?

Career Satisfaction Remains High

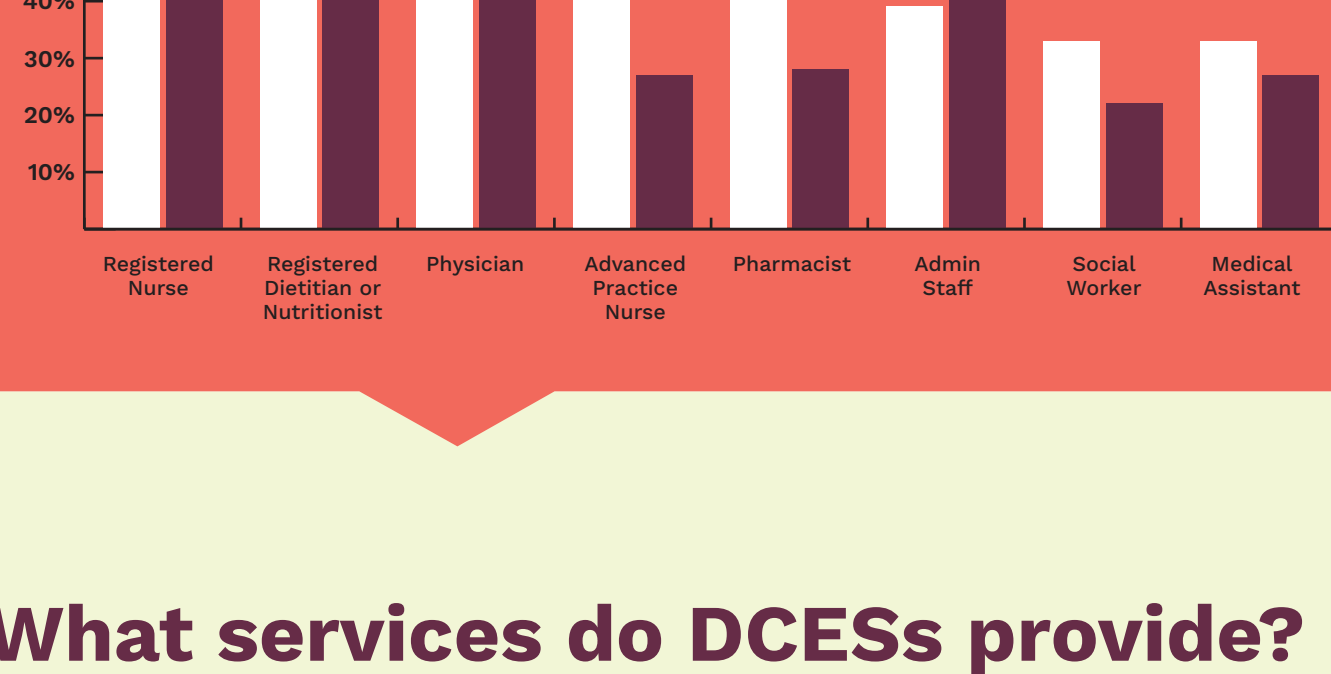
Anyone who has worked with a diabetes care and education specialist sees their passion; it's worn on their sleeve! Going hand-in-hand with this is job satisfaction, which is correspondingly high.



WHAT DOES THE WORKPLACE OF 2025 LOOK LIKE FOR TODAY'S Diabetes Care and Education Specialist?

The Diabetes Care Team Has Expanded

Diabetes care teams have expanded over the past few years as more members are involved. While nurses and dietitians continue to be the main points of care, physicians, pharmacists and social workers are much more commonly involved in patient care than compared to the past.



What services do DCESs provide?

Compared to 2021 research, practices are now significantly more likely to provide prediabetes, continuous glucose monitoring, insulin adjustment/initiation/titration, and medication therapy management services.

Services	Selection	2021	2025
Prediabetes	Practice Provides	11%	▲ 80%
	Provides referrals	51%	▲ 11%
	Unable to provide or refer	22%	▲ 9%
Continuous glucose monitoring services	Practice Provides	55%	▲ 77%
	Provides referrals	15%	▲ 14%
	Unable to provide or refer	10%	▲ 9%
Insulin adjustment, initiation & titration	Practice Provides	60%	▲ 77%
	Provides referrals	7%	▲ 13%
	Unable to provide or refer	7%	▲ 10%
Medication therapy management	Practice Provides	59%	▲ 77%
	Provides referrals	8%	▲ 12%
	Unable to provide or refer	7%	▲ 11%

What diagnoses do DCESs treat?

Type 1 & Type 2 diabetes continue to be the most common patient in the diabetes care and education practice. New questions added in 2025 supports working with other types of diabetes.

Type of People	% Selected		
	2017	2021	2025
Type 2	98%	96%	97%
Type 1	83%	83%	88%
Prediabetes	72%	73%	76%
LADA	-	-	58%
Gestational Diabetes	56%	52%	54%
MODY	-	-	38%
Other	1%	11%	6%

How does the DCES impact the larger care team?

Diabetes care and education specialists independently provide a variety of key services, with strong growth in the areas of monitoring and data interpretation; medication management; insulin initiation and titration; and medication affordability assistance.

Influences	Provides Independently		Recommend to other member of care team		No Influence	
	2021	2025	2021	2025	2021	2025
Healthy eating guidance	72%	86%	6%	12%	3%	2%
Physical activity guidance	66%	78%	8%	17%	4%	4%
Monitoring and data interpretation	47%	77%	11%	16%	10%	6%
Selection of diabetes devices for individuals	-	65%	-	27%	-	9%
Stress reduction	50%	62%	15%	31%	7%	8%
Medication management guidance	29%	57%	19%	36%	19%	7%
Insulin titration	32%	52%	18%	38%	12%	10%
Medication management	27%	47%	24%	46%	8%	7%
Medication affordability or assistance	25%	44%	24%	43%	15%	13%
Insulin initiation	27%	42%	20%	46%	14%	11%
Foot exams	21%	23%	39%	57%	42%	20%
Dental care	5%	8%	37%	60%	41%	32%
Eye exams	5%	7%	50%	70%	27%	23%
Physical therapy	3%	6%	38%	62%	41%	32%

What setting is the DCES most likely to work?

The hospital outpatient setting remains the most common, although this has declined since 2017. Telemedicine is the second most common setting this year (25%), which was not tracked in past surveys.

Services	% Selected		
	2017	2021	2025
Hospital outpatient	53%	36%	34%
Telemedicine or online	-	-	25%
Hospital inpatient	24%	23%	22%
Endocrinologist office	16%	16%	20%
Primary care office	-	19%	19%
Community based organization	9%	7%	8%
Federally Qualified Health Center (FQHC)	5%	6%	7%

I am considered **the go-to resource in my practice/facility/system** in regards to diabetes-related technology and devices.

78% of respondents answered Completely Agree or Somewhat Agree

My clinical expertise has been **required** more recently than in previous years...

76% of respondents answered Completely Agree or Somewhat Agree